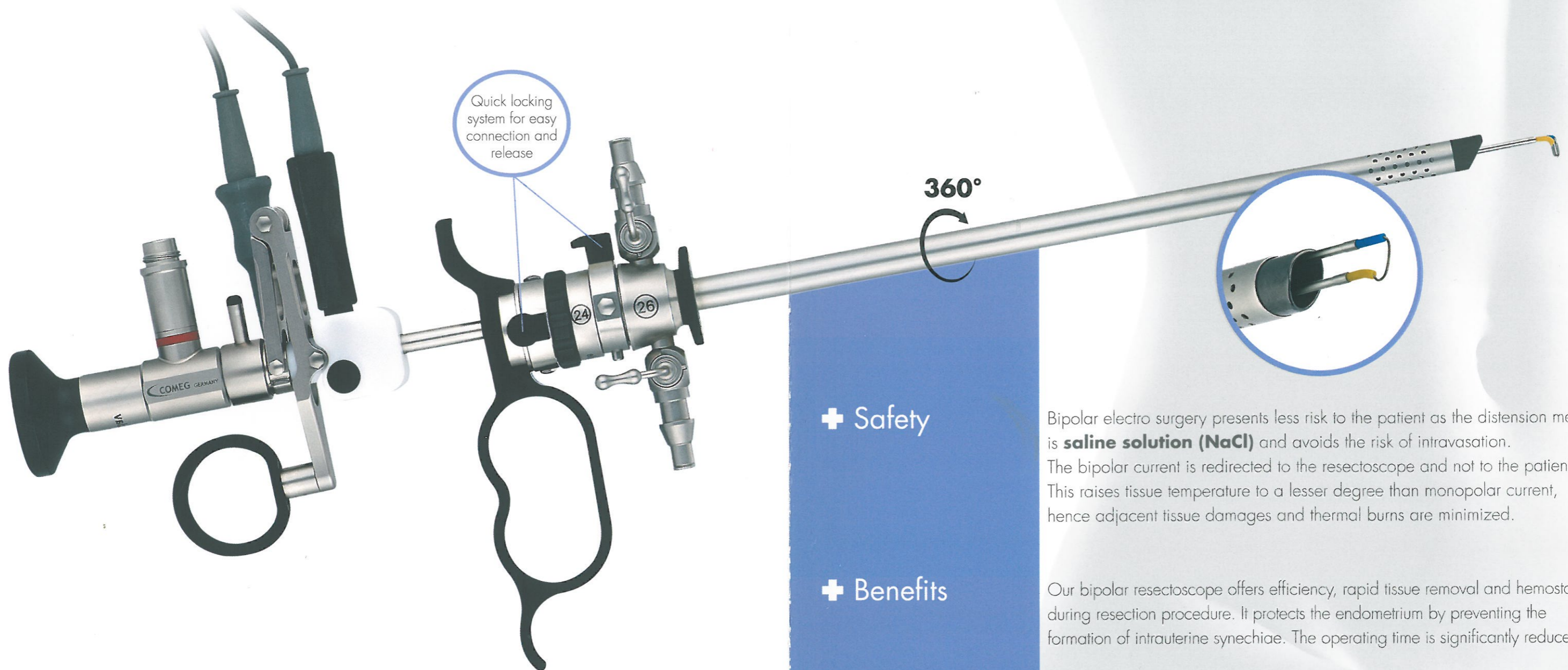


GYN Bipolar resection



+ Safety

Bipolar electro surgery presents less risk to the patient as the distension media is **saline solution (NaCl)** and avoids the risk of intravasation. The bipolar current is redirected to the resectoscope and not to the patient. This raises tissue temperature to a lesser degree than monopolar current, hence adjacent tissue damages and thermal burns are minimized.

+ Benefits

Our bipolar resectoscope offers efficiency, rapid tissue removal and hemostasis during resection procedure. It protects the endometrium by preventing the formation of intrauterine synechiae. The operating time is significantly reduced.

+ Ease of use

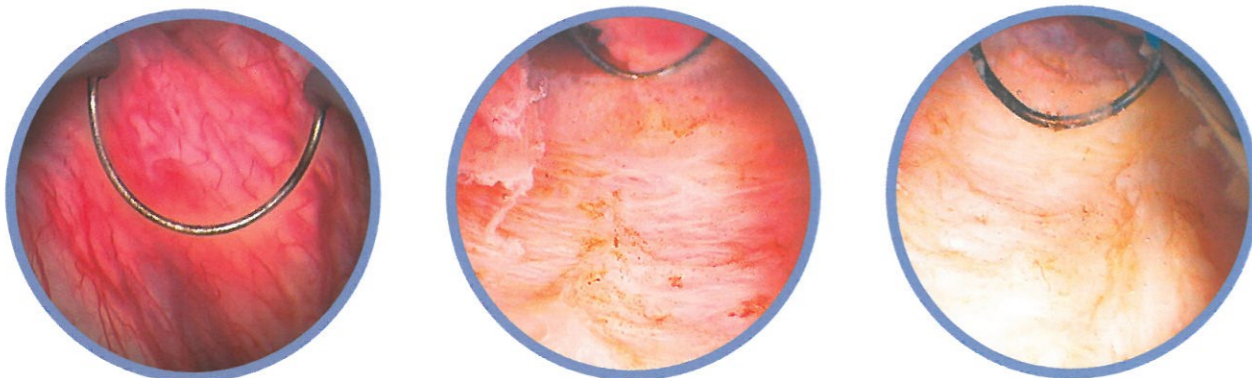
Thanks to the SOPRO-COMEG **quick lock system**, you will easily assemble all parts of your bipolar resectoscope to perform the resection. A choice of passive or active working elements and a large range of reusable electrodes allow you to keep your habits.

+ Compatibility

SOPRO-COMEG bipolar resectoscope can be used with most of electro surgery units having bipolar resection mode.

+ Cost effective

The compatibility of SOPRO-COMEG **reusable electrodes** with your existing electro surgery unit offers cost saving solutions.



Accurate resection and controlled coagulation for a polypoid hypertrophy of the endometrium

SYSTEM CHART

Telescopes

Art. N°163 412 981:

- Telescope 4mm
- 12°
- Autoclavable



Art. N°163 412 982:

- Telescope 4mm
- 30°
- Autoclavable

Working elements

Art. N°395 015 001:

- Passive



Art. N°395 015 002:

- Active



Continuous flow sheath and obturator

Art. N°395 015 027:

- Continuous flow sheath
- 26 Fr. / 24 Fr.
- Quick lock



Art. N°395 015 019:

- Obturator
- Quick lock



Electrodes

Art. N°395 400 026:

- Cutting loop electrode
- Wire Ø 0.35mm
- 24 Fr. NaCl
- Reusable



Art. N°395 400 027:

- Coagulation electrode
- "Collins" type
- 24 Fr. NaCl
- Reusable



Art. N°395 400 028:

- Coagulation electrode
- Ball shape 3 mm
- 24 Fr. NaCl
- Reusable



Art. N°395 400 029:

- Coagulation electrode
- Ball shape 5 mm
- 24 Fr. NaCl
- Reusable



Art. N°395 400 031:

- Coagulation electrode
- Roller
- 24 Fr. NaCl
- Reusable



**For more information,
see our Gynecology catalog**

French production plant:
SOPRO-COMEG
ZAC Athélia IV
Avenue des Genévriers
13705 La Ciotat cedex - France
Tel. +33 (0) 442 98 01 01
Fax +33 (0) 442 71 76 90



info@sopro-comeg.com - www.sopro-comeg.com

German production plant:
SOPRO-COMEG
Dornierstr.55
D-78532 Tuttlingen
Germany
Tel: +49 (0) 7461-9344-0
Fax: +49 (0) 7461-9344-20

GYN Bipolar resection

