

# BY SOPRO COMEG



## ULTIMATE SERIES

The solution for Full HD arthroscopy



## SHAVER SYSTEM

The Sopro 684 shaver handpiece provides aggressive tissue resection and rapid bone debridement during arthroscopic surgery. The easy-to-use device is ideal for all arthroscopic procedures. It combines power and precision to offer maximum cutting performance and comfort for today's surgeon.

## ARTHROSCOPY PUMP

The Sopro 670 arthroscopy pump provides superior visualization during arthroscopic procedures due to its flush function and compact suction management system.

Leakages are quickly compensated and coupled with the instantaneous overpressure release function, the pump offers the highest safety level in fluid management.



French production plant:  
SOPRO-COMEG  
ZAC Athélia IV  
Avenue des Genévriers  
13705 La Ciotat cedex - France  
Tél. +33 (0) 442 98 01 01  
Fax +33 (0) 442 71 76 90

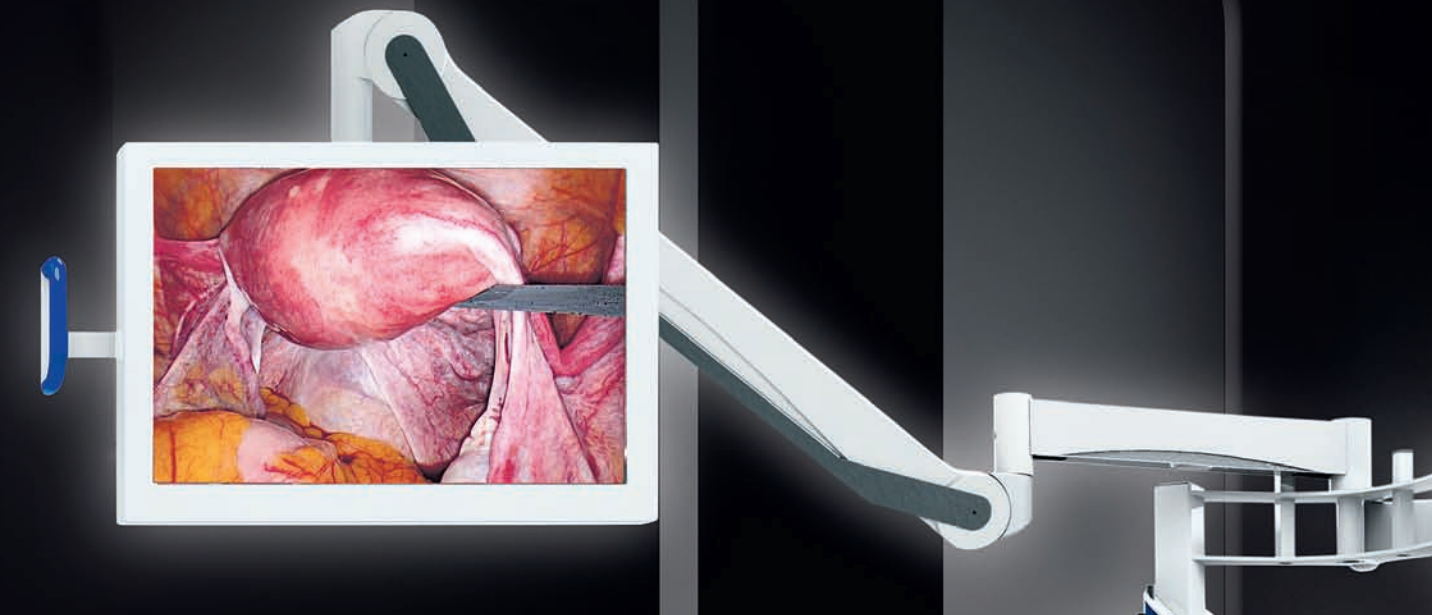


info@sopro-comeg.com - www.sopro-comeg.com

German production plant:  
SOPRO-COMEG  
Dornierstr.55  
D-78532 Tuttlingen  
Germany  
Tel: +49 (0) 7461-9344-0  
Fax: +49 (0) 7461-9344-20

## ULTIMATE SERIES

The solution for Full HD endoscopy



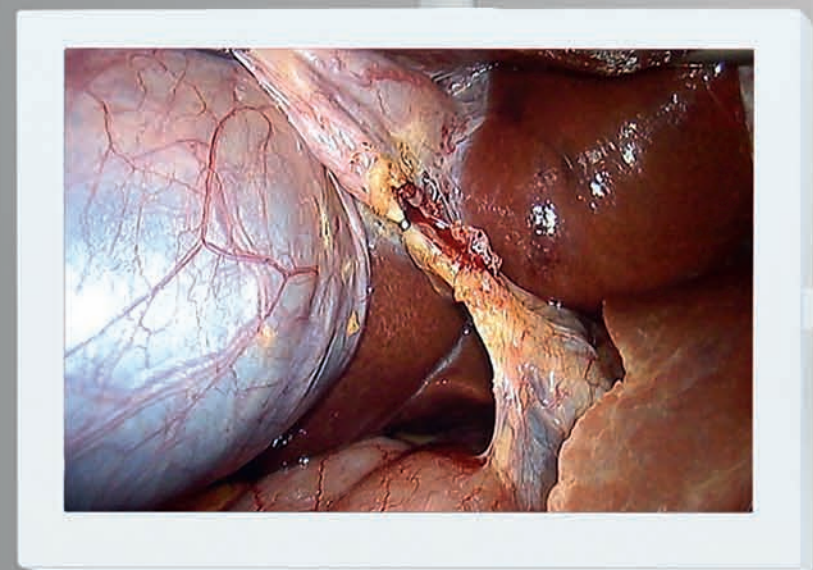
Non contractual document - Ref: 011482A - Copyright © 2011 SOPRO-COMEG. All rights reserved. No information or part of this document may be reproduced or transmitted in any form without the prior permission of SOPRO-COMEG.



# THE FULL HD SOLUTION WITH MATCHLESS DEVICES

## 1080p FULL HD CAMERA

The SOPRO 397 Full HD 3-Chip camera delivers an outstanding image quality due to an unsurpassed 1080p resolution with optimum depth of focus and edge-to-edge clarity and sharpness. Three fully programmable camera head buttons drive up to 20 functions : digital zoom, mirror function, freeze frame, ... The new feature, **icons** allows to use one of them to control the insufflator. The SOPRO 397 Full HD 3-Chip camera sets a new standard in visualization for the OR environment.



## 24" SURGICAL DISPLAY

Designed specifically for the surgical environment, the BARCO MDSC-2124 surgical display is the ideal complement to the SOPRO 397 Full HD camera. Thanks to the bright, high-resolution LCD panel, surgeons are presented with stunning panoramic views and excellent depth perception. The glass panel covering the screen makes it easy to clean.



## MEDICAL CART

With this new trolley, enjoy a better ergonomics. High and narrow, it will find its place wherever you need it. Its stable and long monitor arm (up to 1.40m) allows to place the screen as close as possible. Both arms can rotate from one side to the other.

## 22" HD POINT OF CARE TERMINAL

This 22" High Definition Point-of-Care terminal is a medical computing platform. It provides cutting edge features and versatility to the Operating Room. Equipped with a touchscreen for ease of use and a PC panel with video software management, it captures both images and videos in native resolution.

## 300 WATTS XENON LIGHT SOURCE

For enhanced surgical visualization, the SOPRO 230 Light Source complements the SOPRO 397 Full HD 3-Chip Camera by enhancing its picture with clean, pure light. This maximizes the ability of SOPRO high-definition video equipment to capture the most detailed visualization possible for today's surgical procedure. Its balanced illumination guides you through your endoscopic procedures and it is digitally controlled to ensure smooth and precise shutter operation.



## 45L INSUFFLATOR **icons**

The SOPRO 640 insufflator provides exceptional performances with enhanced safety and reliability. The new feature, **icons** allows to have parameters from the insufflator permanently displayed on screen. The 45L insufflator offers the best market reaction to safer surgery with its ability to maintain pneumoperitoneum under the most extreme conditions.

## FULL HD LAPAROSCOPE

Used in combination with the SOPRO 397 Full high definition 3-Chip camera, the full HD laparoscope achieves picture-perfect imaging performance with twice more contrast than traditional laparoscopes. The image is both focus and distortion-free, ensuring a consistently clear view, increasing the accuracy of surgery.

